



RECP #: 752619
 RECORDED 5/8/2019 AT 1:09 PM BK# 2620 PG# 1661
 Debra K. Lee, CLERK OF LARAMIE COUNTY, WY PAGE 1 OF 1

STATE OF WYOMING CORNER RECORD

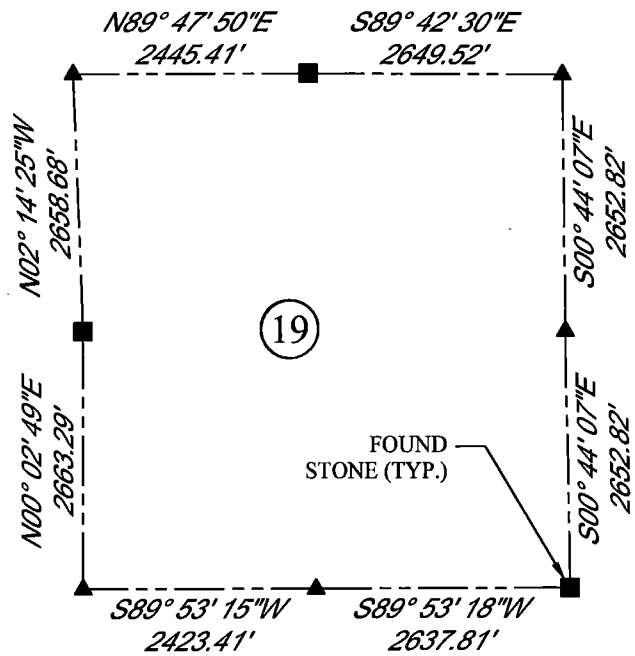
(In compliance with the CORNER PERPETUATION AND FILING ACT, Wyoming Statutes, 1997 Section 33-29-140, et. seq., and the Rules and Regulations of the Board of Registrations for Professional Engineers and Professional Land Surveyors)

SOUTH EAST CORNER SECTION 19, T. 18 N., R. 63 W., 6TH P.M., LARAMIE COUNTY, WYOMING

GLO: SET A SANDSTONE 16X12X6 10 IN. DEEP. MARKED WITH 2 NOTCHES ON S. SIDE AND 5 NOTCHES ON E. SIDE.
FOUND: SANDSTONE SEMI-SET ON S. SIDE OF N/E/W FENCE COR. APPROX 14X10X5. NO MARKINGS FOUND ON STONE.



SCALE: NONE
 NORTH DETERMINED BY
 G.P.S OBSERVATIONS



LEGEND:

- FOUND BLM CAP
- FOUND USFS CAP
- FOUND STONE
- FOUND PRIVATE MONUMENT
- ◆ CALCULATED POSITION
- ▲ SET MONUMENT (LS10245)
- SECTION LINE

DATE OF FIELD WORK: 08/17/2018 OFFICE REFERENCE: 746049 ----

CROSS INDEX DIAGRAM

	1	2	3	4	5	6	7	8	9	10	11	12	13	14	15	16	17	18	19	20	21	22	23	24	25
A																									
B																									
C		6			5				4					3					2						1
D																									
E																									
F																									
G		7			8				9					10					11						12
H																									
J																									
K																									
L		18			17				16					15					14						13
M																									
N																									
O																									
P		19			20				21					22					23						24
Q																									
R																									
S																									
T		30			29				28					27					26						25
U																									
V																									
W																									
X		31			32				33					34					35						36
Y																									
Z																									

WOOD
 2615 AVIATION DRIVE
 SHERIDAN, WY 82801
 PH: 307-675-6400

THIS CORNER RECORD WAS
 PREPARED BY ME OR UNDER
 MY DIRECTION AND
 SUPERVISION,
 SEAL AND SIGNATURE

wood.

